



GPS & AVL Solution



## GPS Monitoring for Optimized Fleet Management

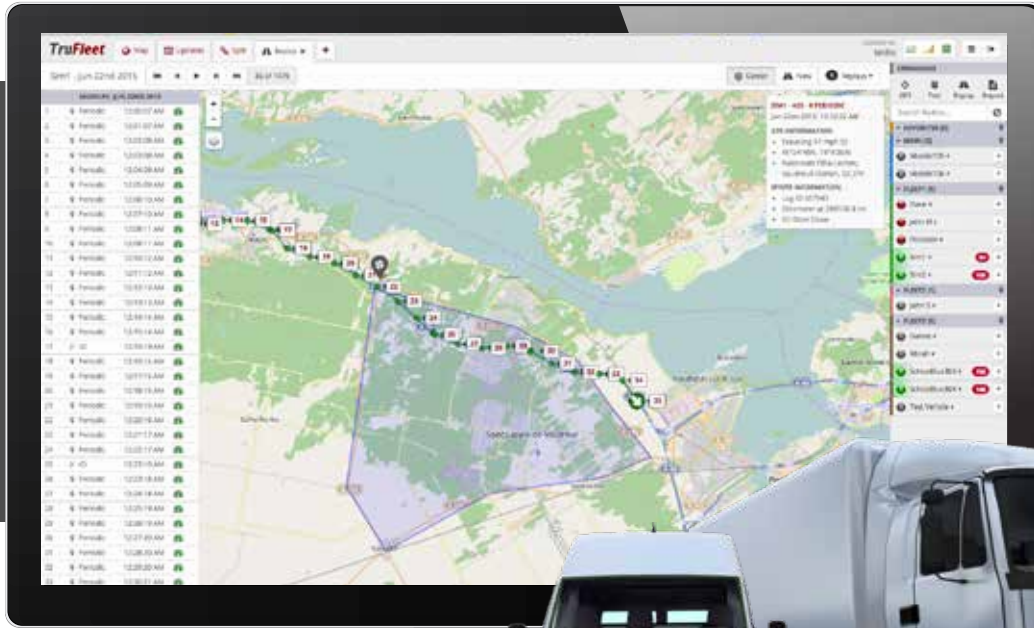
TruFleet™ GPS tracking system puts you in the passenger seat of every vehicle. The robust system allows users to track and manage fleets in real-time using a rich, intuitive, mapped function display via a web browser on a desktop, tablet or mobile phone.

Manage mobile assets, increase personnel safety, audit vehicle routes and create comprehensive reports to optimize efficiency. The application is easy to operate and can be applied to a wide range of applications for both vehicle and portable radio fleets.

Teldio

# Enhancing MOTOTRBO™ Radios with GPS

Stay connected to your vehicles & assets around the clock and in real-time with TruFleet's easy-to-use web-based solution from your desktop computer, tablet or smartphone. Track the location and movements of MOTOTRBO™ radios, improve communication with remote workers with in-built text messaging and email, enhance productivity, and ensure the safety of employees & valuables assets.



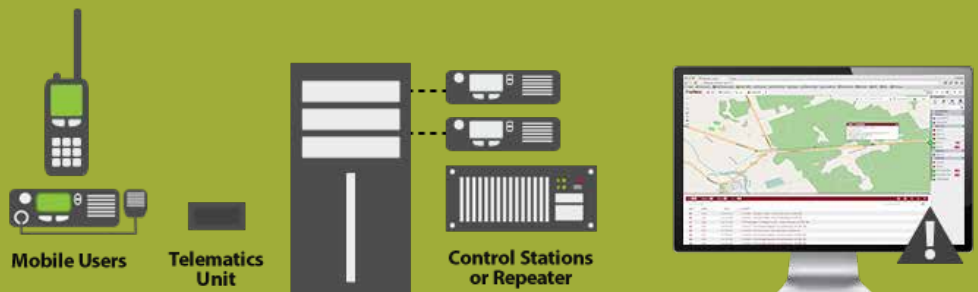
## Key Use Cases

- School Buses
- Snowplows
- Cement Trucks
- Taxis
- Delivery Cars
- Transport Trucks

*Whether you have one vehicle or a large fleet, the solution is tailored for both dispatchers & management.*

Trufleet™ AVL solution is a software application installed on a server, which tracks the location of GPS-enabled MOTOTRBO radios.

The server interfaces to the radio system using MOTOTRBO control stations or repeaters in most radio network configurations.



## Application Features

- The **intuitive, web-based** TruFleet user interface displays the location of radios (in vehicles or with personnel) on the map as the location information is received via the radio network.
- When a vehicle activates an **emergency message**, an audible alert is raised on screen & the location of the vehicle is automatically centered on the map
- **Preset and customizable reports** available in PDF, Word and Excel formats and **route replays** that can be played on screen or exported to Google Earth offer a wide range of reporting features.
- Included **Open Street Maps** can be augmented by a low cost monthly subscription to **Google Maps**. Users also have the ability to bring in **Shapefiles** to add information to map layers or access **offline maps** by downloading them from a list of pre-approved map tile servers.
- Alerts can be generated when users speed, enter/exit geofences, raise radio emergencies, move outside of operational hours etc. The alerts can be paired with **Teldio AMS** to generate various types of alerts in real time.
- TruFleet can be paired with **Teldio's MDN and LW solutions** to include location in Personal Safety alarms generated by radio users.

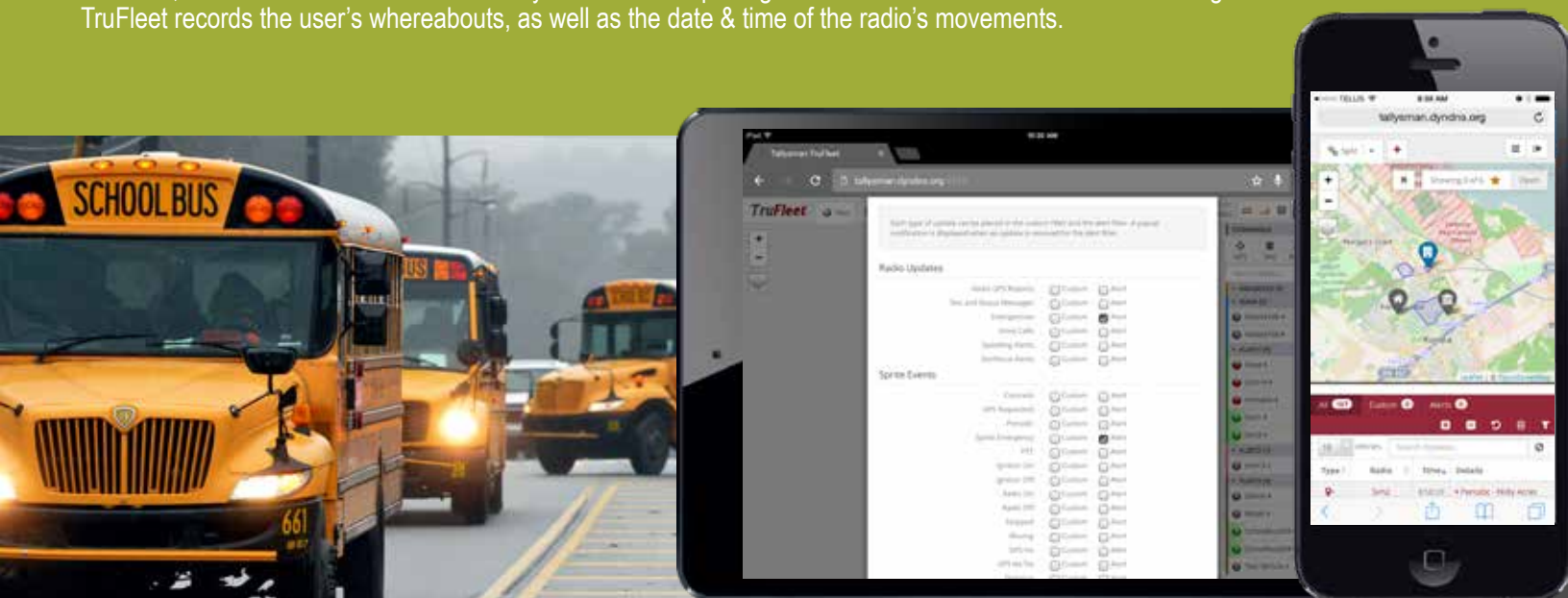


# Telematic Reporting with Tallysman Sprite™

For more detailed, event-driven telematics reporting the Tallysman Sprite™ TW200 in-vehicle hardware or the TW250 software APP for the MOTOTRBO radio can be added. The conrail tracking device and application stores up to 100 high rate position reports into one single MOTOTRBO data transmission, enabling complex sub 10-second tracking reporting. The rich reporting features include precision tracking down to the block level, odometer counts, moving/stopped states and real-time contact closure tracking (plow up/down, waste bin pick up, door open/close, etc).

## iBeacon Indoor Tracking

TruFleet provides real-time indoor location data using strategically placed wireless iBeacons. As a radio pairs with iBeacons at known locations, TruFleet displays the user's location on the web browser. When leaving a bluetooth area and going outdoors, the MOTOTRBO radio seamlessly switches from pairing with Bluetooth beacons to GPS monitoring. TruFleet records the user's whereabouts, as well as the date & time of the radio's movements.



## Leverage the Power of GPS to Monitor Employees, Improve Efficiency & Safety



### Increase Situational Awareness

See where your vehicles are at all times. TruFleet empowers dispatchers by quickly letting them locate subscribers in real-time to redirect them from traffic, accidents or provide them with new orders.



### Enhance Monitoring & Auditing Capabilities

See every action from point A to point B with rich real-time and historical location data. Gain insight into your fleet performance, including after-hour vehicle activity, mileage, idle times, maintenance reports, speeding, and more. The flexible reporting tool allows users to generate custom reports and export them in Excel or PDF format and automatically email them to supervisors.



### Improve Productivity

Boost employee production and accountability by knowing where your vehicles are. With one click you can see subscribers' current location and review their past movements. Automate mileage collection, create more efficient routes, find the closest vehicle to a customer, and receive preventative maintenance reminders.



Teldio was founded in early 2008 with a primary focus on two-way radio applications for MOTOTRBO devices and is an Authorized Application Provider of MOTOTRBO. Teldio has evolved to be a systems integrator and applications developer delivering solutions targeted at improving operational efficiency, employee safety & cost reduction for our customers.



### Feature Rich Apps

Teldio has the most feature rich applications available for MOTOTRBO™ radios. Do more than you ever imagined possible with your radios!



### Easy to Install

Radio networks can be very complex, that's why we strive to have the simplest installation process. Our apps are easier than ever to deploy.



### Scalable Solutions

Once you deploy a Teldio application it's a piece of cake to layer on additional user licenses or complimentary applications to the network.



### Dedicated Support

We pride ourselves on our excellent North American customer service, and share the philosophy that with premium products must come premium support.

**Get In Touch!**

1.855.743.1333 390 March Rd, Kanata, ON K2K 0G7 [teldio.com](http://teldio.com) [sales@teldio.com](mailto:sales@teldio.com)